

A photograph of the Park Academy building, a brick structure with a dark blue metal roof. A brick archway in the foreground features a sign that reads "PARK ACADEMY". To the left, an American flag flies on a tall pole. The building is surrounded by green trees and a clear blue sky. In the foreground, there are some colorful flowers and a mailbox with the number 1915.

PARK ACADEMY

# **PARK ACADEMY**

**2014-2015 Annual Report & Newsletter**

*10-Year Anniversary Edition*



Park Academy students in the Maybelle Clark Macdonald Fund Courtyard

## TABLE OF CONTENTS

Letter from Leadership.....	2
10-Years of Empowering Students.....	3
Curriculum.....	4
Results.....	4
Welcoming New Team Members.....	5-6
Events .....	7-8
Capital Campaign Update.....	9
Capital Campaign Contributions.....	10
Consolidated Financial Information.....	11
Fiscal Year Ending June 30, 2015.....	12
Donors.....	12-13
Board of Directors.....	14
Staff.....	14



# LETTER FROM LEADERSHIP

With the commitment, passion and support of faculty, students, families, board members and donors; we opened our doors to our beautiful state-of-the-art facility on September 8, 2014. Our new school created an inspiring zest for learning. In every classroom, bright, motivated students and teachers are invested in both teaching and learning.

We've come a long way since 2005 with just 17 students and a handful of staff members. We began the 2014-2015 school year with 68 students, our highest enrollment ever! Although our program continues to grow and evolve, one thing remains constant; our passion to help children with dyslexia, unlock their love of learning, and reach their full potential.

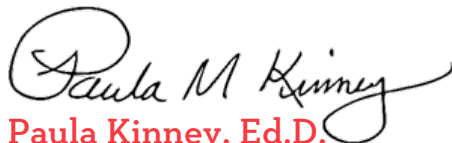
Students this year had the chance to learn in a totally new environment. Our beautiful new building is equipped with state-of-the-art, hands-on technology to aid in multi-sensory learning; outdoor sports courts, fields and play structures that offer organized play and exercise; a learning garden where students studied "seed to fork" practices in partnership with our Culinary Arts and Science classes; a stage with sound, lighting and projection capabilities, allowing students to engage their senses in Theater Arts; a labyrinth where students can practice mindfulness and inner reflection; space to lounge and more! We will continue to find new ways to leverage our environment so we can continue to help students **ignite** their passion for learning, **empower** them in the classroom, and help them **imagine** brighter futures for themselves.

In March, we received a challenge grant of \$400,000 from the M.J. Murdock Charitable Trust towards our Capital Campaign. With the help of many supporters, we have begun to address this challenge. Once reached, we will be half way to our overall Capital Campaign goal of \$4 Million.

We thank all of you who've supported us in our mission to empower students with diverse learning challenges to reach their highest potential of giftedness while excelling academically and becoming responsible citizens and community leaders. Your donations have moved us toward reaching an exciting new level in our organization.

We are enthused about the challenges and triumphs that lie ahead, and hope that you will continue to partner with us in providing excellent educational opportunities for children with dyslexia.

Sincerely,



**Paula Kinney, Ed.D.**

Head of School



**Andy Pihl**

Board Chair

# 10 YEARS OF EMPOWERING STUDENTS

**2005**

## **PARK ACADEMY IS FOUNDED BY PIPER PARK**

Given the lack of suitable options for students with dyslexia, Piper Park founded Park Academy in the hope of giving other students the opportunity that her son received by attending a school that addressed his dyslexia.

**2007**

## **NEW LEADERS HELP SHAPE THE MISSION OF PARK ACADEMY**

Dr. Paula Kinney was hired as the Head of School, who then brought on Bill Westphal as the Associate Director. Their experience and passion for students helped define the mission and vision of the school and expanded curricula to include enrichment classes such as music, theater arts, and second languages.

**2009**

## **OMSI PARTNERSHIP BRINGS EXPERIENTIAL LEARNING TO STUDENTS**

As our school continued to grow, so did our relationships with community organizations. Park Academy began making regular visits to OMSI for science labs and other hands-on learning to engage students in a variety of sensory learning methods. This continues to be a favorite activity among our students!

**2013**

## **PARK ACADEMY LAUNCHES FIRST EVER CAPITAL CAMPAIGN**

With the purchase of the Oregon National Guard Armory building on South Shore Boulevard in Lake Oswego, Park Academy embarked on a journey that would provide students with the tools and space needed for continued growth in social and academic environments.

**2014**

## **PARK ACADEMY MOVES TO NEW STATE-OF-THE ART FACILITY**

On September 8, 2014, students began the year in the new building with excitement and anticipation. The space has provided a safe and nurturing environment for students to learn and grow together, and has allowed our curricula to grow to include classes such as culinary arts and team sports.

**2015**

## **PARK ACADEMY CELEBRATES 10-YEAR ANNIVERSARY**

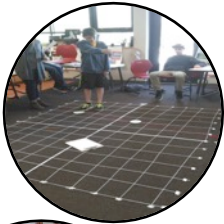
Over the past decade, Park Academy has built a reputation of excellence and distinction among the education community. The students and families have expressed immense gratitude for the life-changing experiences that Park Academy has given them.

# CURRICULUM

Our core values are integrated into our curriculum to **ignite** a passion for learning, **empower** unique learning profiles, and help students **imagine** a brighter future.



**Reading:** Reading is offered through small group instruction using scientifically proven systems, including Barton Reading and Orton Gillingham. Many students receive specialized instruction based on their specific needs for direct, systematic, explicit methodologies.



**Mathematics:** Our highly creative teachers infuse visual and kinesthetic practices into their mathematics lessons to help students see the bigger picture of what they're learning. Upper school and lower school focus on unique methodologies, including the use of manipulatives and technology to help students meet and exceed grade-level expectations.



**Enrichment:** Students explore a wide variety of arts and sciences, which are an integral component of our program. Traditionally, Park Academy has offered enrichment courses such as theatre, visual arts, philosophy, yearbook and drumming. Last year we were able to add classes such as culinary arts, videography, and leadership, as well as expand our P.E. curriculum.

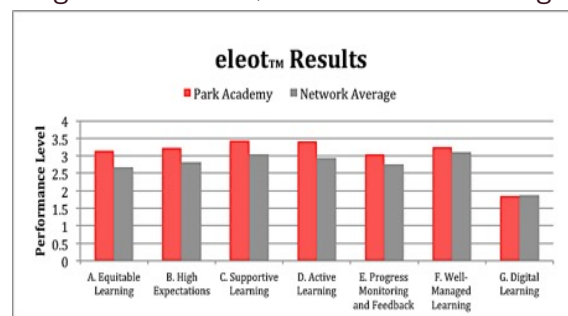
# RESULTS

Because every child demonstrates learning differently, we use a variety of measures to assess learning, including work samples, performance tasks for writing and math, and project-based assessments.

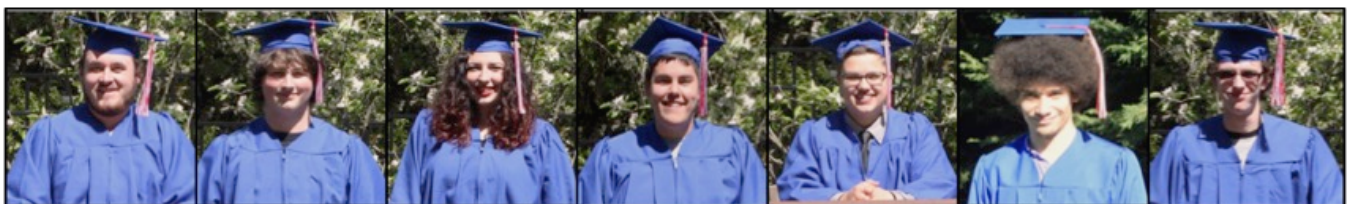
Park Academy's accreditation through AdvancED was renewed this year. The school received the highest score in all four areas of Student Performance Diagnostic criteria, and an above average score in 10 out of 12 of the indicators of teacher effectiveness and student learning.

The Effective Learning Environments Observation Tool (eleot™) measures the extent to which learners are in an environment that is equitable, supportive, and well-managed. Park Academy scores were above average on 6 out of 7 areas.

*A full version of the accreditation report is available on our website.*



**Park Academy has maintained a 100% graduation rate**, along with all seniors having been accepted into a post-secondary education option prior to graduating.



# WELCOMING NEW TEAM MEMBERS

## Craig Lowery - Associate Director

Craig Lowery has spent his career in education focused on students with unique learning challenges. After beginning his career as a Language Arts teacher, he set off overseas serving as a teacher and teacher trainer as a Peace Corps Volunteer on the distant Pacific island, Archipelago of Kiribati. Soon after returning, Mr. Lowery completed his M.S. in school and clinical counseling and served as a teacher, counselor and adolescent therapist before moving into administration. Mr. Lowery comes to Park having worked in the private school special education community for the last 10 years. He served as teacher and counselor for Gately Academy and as principal of Bridges Middle School. In addition to his passion for teaching, you can find him out and about on adventures with his wife, Jessica, and two children, Jackson and Sophia.



---

## Chris Devers - Teacher



Growing up as a military brat, Chris has lived all over the United States and abroad. Some of the more unique locations were Iceland, Newfoundland, and Hawaii. Chris attended the University of Alabama-Birmingham, where he majored in Comprehensive Language Arts. Upon graduating, Chris worked for a small private school devoted to children with specific learning differences. Because it was a small school still growing, he had to be flexible enough to teach multiple courses and a variety of subjects.

Chris has also attended many seminars on how to work with children who have learning differences, and how to use technology in the classroom. Through his journey to become an educator, he has discovered that his students have learning differences, not disabilities. This has led him to believe that education is possible for all students with the right accommodations and instructional techniques.



## Elizabeth Dove - Development Director

Elizabeth (Liz) Dove is a native Portlander, growing up in East County. Liz has a degree in Political Science, with a focus on minority studies, from Portland State University.

For the past thirteen years, Liz has worked hard to raise funds and awareness for children struggling with mental health issues. Most recently, as part of the development team at Trillium Family Services, she had the pleasure of working on a joint fundraiser with Park Academy. Throughout the course of implementing the event, she got to know the amazing staff, donors and families of Park Academy. She finds the stories of how the school impacts our students, their lives and their families inspiring.



Liz believes that everyone can make a difference in their own way. She enjoys helping individuals and organizations discover how their time, talent and treasures can impact the Park community.

---

## Chelsea Jepson - Teacher



Inspired by her mother's work in special education, Ms. Jepson decided to follow the same path and pursue a career in the field of special education. Chelsea earned a bachelor's degree in Human Development and Family Sciences from Oregon State University. After graduation, Chelsea furthered her education at the University of Oregon where she received her Master's of Science in Special Education and an Oregon Teaching License.

After two years of assisting in the special education department at Tigard High School, Chelsea felt it was time for change. Networking led her to find Park Academy; she was drawn in by the small student body and contagious happiness emitted by both staff and students. Everyday Chelsea learns new ways to teach students with learning differences and appreciates them for being a part of her growth as a teacher.

View all staff bios on our website: [www.parkacademy.org](http://www.parkacademy.org).

# EVENTS



Park Academy's Fourth Annual "Drive for Dyslexia" Golf Tournament was held at The Reserve Vineyard & Golf Club on Thursday, September 25, 2014. With 123 golfers, we successfully raised over \$23,000 for the Park Academy Scholarship Fund!

This annual event serves as an opportunity for Park Academy to connect with the community on the challenges our students face and the results our school has been able to accomplish.



## Thank You to our Sponsors!

---

### Robertson & Olson Construction

### The Cleveland Clinic

AKS Engineering & Forestry  
The Greenbrier Companies  
Mengis Capital Management  
New Avenues for Youth  
Parker Development NW, Inc.  
Providence Cancer Center

Brent Hillman & Associates, Inc.  
Gorilla Capital  
Meduri World Delights  
OSTMO Construction  
PARR Lumber  
Trillium Family Services

El Gaucho

Lompoc Brewing

Widmer Brothers

Reser's Fine Foods

SP&B





On Thursday, June 25, 2015, Park Academy hosted its first ever fundraising dinner and auction. Special guests, Margie Boulé and Larry King, entertained the sold out auditorium of 150 guests after an evening of fun and fundraising. The event brought in over \$260,000 for our school's Scholarship Program.

This inaugural event allowed the school an opportunity to share their mission and reflect on the critical need for students with dyslexia to receive an educational experience that meets their unique learning profiles.



## Thank You to our Sponsors!

---

Lucky Limousine & Towncar Services/Heather Killough

Piper Park

Ray & Rosie Park

Dan & Paula Kinney

Gary Maffei & Marc Lintner

Mengis Capital Management

Robertson & Olson Construction

SSOE Group

Trillium Family Services

# CAPITAL CAMPAIGN UPDATE



We have come a long way from our humble beginnings operating the past eight years in modular buildings on the Marylhurst University campus. Thanks to the generosity of many special friends, Park Academy has a beautiful new school designed to enhance the learning experience for children with dyslexia. Our new facility allows us the opportunity to double our enrollment, but more importantly, provide an environment better equipped to assist students with multi-sensory instruction, physical education, and assistive technologies.

Community members have been amazed by the transformation of the Armory in Lake Oswego. It would not have been possible without the incredible support of Mr. Ray Park and the Park Foundation. The Foundation's \$4 million lead gift toward an \$8 million goal enabled Park Academy to fast track expansion plans. This allowed us to complete our premiere school well ahead of schedule. Subsequently, the Park Foundation has offered to match every dollar raised up to \$4 million to help assure the long-term viability and success of our school. As of June 30, 2015, we have raised \$1,206,500 toward this goal.

In addition, we are thrilled to announce that we have received a challenge grant of \$400,000 from the M.J. Murdock Charitable Trust. Through the end of the fiscal year, \$106,000 has been raised toward this match and we are confident we will raise the entire amount well before the deadline at the end of 2017. Once the M.J. Murdock Charitable Trust challenge is fulfilled, the additional \$800,000 will take the campaign over the halfway mark of our goal. This is the most ambitious philanthropic effort in Park Academy's history. Our success will be dependent upon the remarkable generosity from within our community as we strive to broaden the awareness of the school's mission.

The response to our campaign within the community has been overwhelmingly positive and we are deeply grateful. We would like to thank all those who have generously contributed to the campaign. It is with your continued support this endeavor will succeed.

Sincerely,

A handwritten signature in black ink, appearing to read "Jeff Mengis".

Jeff Mengis  
Chair, Capital Campaign Cabinet  
Trustee, Board of Directors

## **CAPITAL CAMPAIGN CONTRIBUTIONS:**

*The following are donations to the capital campaign through June 30, 2015:*

### **\$100,000 AND ABOVE**

Harry A. Merlo Foundation  
Douglas F. Lilley  
Maybelle Clark Macdonald Fund  
The Park Foundation  
Piper Park  
Patricia J. Reser

### **\$25,000 - \$99,999**

Kristen and Thomas Boothe  
Cheng Family Foundation  
The Edward and Romell Ackley Foundation  
Heather Killough  
Josephine and Peter Pope, Sr.

### **\$10,000 - \$24,999**

A.A. Emmerson  
Griffin Construction & Fab.  
Everett Johnson  
Neil Jubitz  
Gary Maffei and Marc Lintner

### **LESS THAN \$9,999**

Harnish Properties Charitable Fund  
Dr. Paula and Dan Kinney  
Susie and Jeff Mengis  
Marilyn and R. B. Pamplin, Jr.  
Leslie and Andy Pihl

*Thank You!*



# CONSOLIDATED FINANCIAL INFORMATION

## PARK ACADEMY

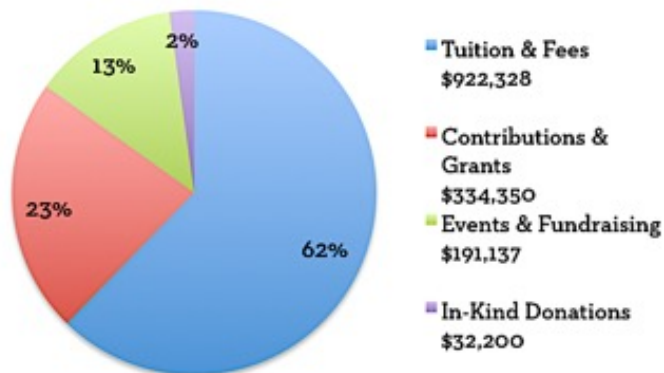
### Statements of Financial Position

As of June 30, 2015 (with comparative totals for 2014)

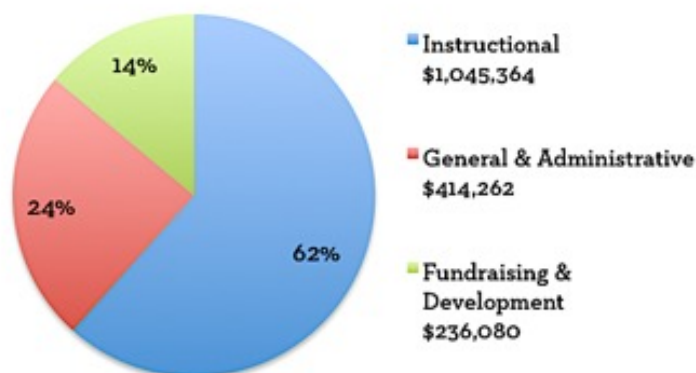
	<b>2015</b>			<b>2014</b>
				(Comparative) (Only)
	<b>Unrestricted</b>	<b>Temporarily Restricted</b>	<b>Total</b>	<b>Total</b>
<b>Current Assets</b>				
Cash and equivalents	\$208,729	\$11,642	\$220,371	\$137,588
Board restricted cash	282,215	-	282,215	150,500
Accounts receivable, net	34,461	-	34,461	77,784
Pledges receivable	179,605	-	179,605	-
	705,010	11,642	716,652	365,872
<b>Property and Equipment</b>				
Net of accumulated depreciation	111,586	7,246,056	7,357,642	513,083
	111,586	7,246,056	7,357,642	513,083
<b>Other Assets</b>				
Pledges receivable	187,000	-	187,000	-
Investments	511,843	57,427	569,270	-
	698,843	57,427	756,270	-
<b>Capitalized Building Lease</b>	-	-	-	7,500,000
<b>Total Assets</b>	<b>\$1,515,439</b>	<b>\$7,315,125</b>	<b>\$8,830,564</b>	<b>\$8,378,955</b>
<b>Liabilities</b>				
Accounts payable	\$12,919	-	\$12,919	\$4,734
Prepaid and deferred tuition	48,860	-	48,860	115,250
	61,779	-	61,779	119,984
<b>Capitalized Building Obligation</b>	-	2,270,267	2,270,267	3,500,000
<b>Total Liabilities</b>	61,779	2,270,267	2,332,046	3,619,984
<b>Net Assets</b>				
Unrestricted	\$224,881	-	\$224,881	\$598,398
Board restricted campaign funds	1,228,779	-	1,228,779	150,500
	1,453,660	-	1,453,660	748,898
Temporarily restricted funds	-	5,044,858	5,044,858	4,010,073
<b>Total Net Assets</b>	1,453,660	5,044,858	6,498,518	4,758,971
<b>Total Liabilities and Net Assets</b>	<b>\$1,515,439</b>	<b>\$7,315,125</b>	<b>\$8,830,564</b>	<b>\$8,378,955</b>

# FISCAL YEAR ENDING JUNE 30, 2015

## INCOME 2014-2015



## EXPENSES 2014-2015



## THANK YOU TO OUR DONORS

The following are donations received July 1, 2014 through June 30, 2015. We make every effort to acknowledge our donors properly. If you are listed incorrectly, or missing from this list, please contact the Development Department at 503.594.8800.

### \$10,000 AND ABOVE

The Frederick D. & Gail Y. Jubitz Foundation  
Heather Killough

M.H. Randall Foundation  
The Park Foundation  
Robin and Kelly Park  
Piper Park

Julietta Bauman-Freres and Frank Schreck  
Margaret Steuber

### \$1,500 - \$9,999

Sandy Andersen Albers and Bob Albers  
Anonymous  
Cherie and James Beatty  
Terri and Ron Best  
Kristen and Tom Boothe  
Kelly Buechler  
Judy and Don Buss  
Charles Schwab & Co., Inc.  
Cleveland Clinic  
A.A. Emmerson  
Denise and Larry Grimes  
Kathi Harvey

The Jackson Foundation  
Gail and Fred Jubitz  
Dr. Paula and Dan Kinney  
Linda and Bob Kraus  
Marci and Neil Laird  
Gary Maffei and Marc Lintner  
Marie Lamfrom Charitable Foundation  
Lisa Emmeret and Steve McClurg  
Joe Meduri  
Susie and Jeff Mengis  
Nike, Inc.  
Margaret and Ken Oliphant

Rosey and Ray Park  
Josephine and Peter Pope, Sr.  
Julie and Bill Reiersgaard  
Patricia J. Reser and Bill Westphal  
Robertson & Olson Construction, Inc.  
Linda and Jim Scheidel  
Shell Oil Company Foundation  
Matching Gifts  
The Silvey Family Foundation  
SSOE Group  
Trillium Family Services  
Patti Warner

### **\$500 - \$1,449**

AKS Forestry & Engineering, LLC  
Audrey and Todd Alsdorf  
Boly:Welch  
Brent Hillman Associates Inc.  
Eric Brink  
Dr. Keith Cheng and Dr. Karen Ulloth  
COLAB Architecture + Urban Design, LLC  
Dr. Marcia Darm and Bruce Berning  
Sallie and Dan Dutton  
El Gaucho  
Joan Fisher  
Katherine and Mark Frandsen  
Evelyn and Howard Freedman  
Anne and Chuck Gray

The Greenbrier Companies  
Clare Hamill  
Dr. Douglas and Selby Jean Key  
Linda and Mike Larson  
Douglas F. Lilley  
McMenamins, Inc.  
Dominic Meduri  
Sharon Mueller and Reynolds Potter  
Joan Neice  
New Avenues for Youth  
Tina and Matt Olson  
Terri and Mike Park  
Jeff Parker  
Parr Lumber  
Leslie and Andy Pihl

Shirley and David Pollock  
Proseeds Marketing, Inc.  
R. Blooms of Lake Oswego  
Real Benefits Group Inc.  
Steve Reinisch  
Dr. Sheryl and Chris Reinisch  
Dr. Casey and Kimi Rucker  
Blake Sakamoto  
Marcia and John Stilwell  
Ryan Strasshofer  
Gina and Max Williams  
Randy Wolfe  
Diane and Rob Young

### **\$250 - \$499**

Joseph Adams  
Jean and Shaman Anderson  
Lee Arndt  
Blairco Incorporated  
Dr. Nicolas Brown  
Scott Cantonwine  
Greg Chaillé  
Toni Cole  
Randall Collis  
Justin Fisher  
Laurie and Mike Francis  
Bradley Green

Lorie and Tom Griffith  
Linda and Ralph Inman  
Carla and Alan Jochim  
Marjorie and Everett Johnson  
Kroger  
Jessica and Craig Lowery  
Patrick Maguire  
Dianna and Michael McKillip  
James Mendenhall  
Meridian Park Medical Center & Foundation  
Jean and Rudi Milpacher

Leslie McKenzie and Mickey Morey  
Quadrant Systems  
Koko and Walter Reyes  
Connie and Robert Romanski  
Warren and Sheryl Rosenfeld Fund of the Oregon Jewish Community Foundation  
Sheryl Sessions  
Jana and Lynn Wilkins  
Edith Wilson  
Susan Lyon and Tim Wybenga

### **LESS THAN \$249**

Gavin Amato  
Amazon Smile Foundation  
Rick Attanasio  
Kim Barton  
Barry Birch  
Anne and Mario Bisio  
Rich Blum  
Box Tops For Education  
Sophie and David Brebner  
Erica Bullard  
Bullseye Pub  
Ann Patricia and Donald Burke  
Margaret and James Burmaster  
Greg Byrne  
California Pizza Kitchen  
Jana Cole  
Jim Colgan  
Jeff Concannon  
Bob Cornell  
John Crawford  
David Cuevas

Kerry Cunningham  
Dottie and Ron Daniels  
Lisa and Phil Davis  
Teresa and John Day  
Diana Deyoung  
Tyler Dillavou  
John Donovan  
Elizabeth Dove  
Ann Doyle  
Jeff Foote  
Jill Giedt  
GP Kitchen: Cafe & Catering  
Jeff Green  
Kaitlin Hansen  
Heather Herron  
Mary Hoermann  
David Huey  
iGive  
Jenna and JR Kisor  
Mary and David Kohler  
John Kerekanich

Joan Kruse  
Carol Ladd  
Brandon Lafferty  
Shelva Davis and Dean Lane  
Edie Liebergot  
Carl Madore  
Julie Marquard  
Diane and Mike Mason  
Rick McCloskey  
Justin Meduri  
Michelle Sosinski Coaching LLC  
Mississippi Pizza Pub  
Ryan Montler  
Fawn Morris  
Chris Morrison and Kris Kremers  
New to You, Simply Posh  
Erik Ostmo  
Jason Rea  
Joseph Rowe  
Rumi Simone  
Stan Sawicki

Heidi Schmitz  
Skidmore Bluffs Band  
Jeanette Spence  
Standard Insurance Employee Engagement Fund of the Silicon Valley Community Foundation  
Amy Stewart  
Judy Sutton  
TARGET - Take Charge of Education  
Ben Test  
William Truncali  
Tucci Ristorante  
Dr. Walter and Caryn Urba  
Adam Weiner  
Widmer Brothers Brewing  
Willamette Valley Vineyards  
Chris Wold  
Dr. Donald Young  
Zeppo Italian Restaurant



# BOARD OF DIRECTORS

**Andy Pihl**, Trustee & Board Chair

**Tom Boothe**, Trustee

**Dr. Keith Cheng**, Trustee

**Gary Maffei**, Trustee & Treasurer

**Jeff Mengis**, Trustee & Capitol Campaign Chair

**Piper Park**, Trustee & Founder

**Dr. David Plotkin**, Trustee

**Dr. Sheryl Reinisch**, Trustee

**Gina Williams**, Trustee

## STAFF

### Administrative Team

**Dr. Paula Kinney**  
Head of School

**Craig Lowery**  
Associate Director

**Kim Barton**  
Admissions Coordinator

**Jenna Kisor**  
Development/Events Coordinator

**Terri Park**  
Volunteer Coordinator

**Elizabeth Dove**  
Development Director

**Fawn Morris**  
Executive Assistant

### Teachers/Instructional Assistants

**Jeff Barnes**

**Jill Giedt**

**Maddy Roach**

**Sarah Davis**

**Chelsea Jepson**

**Christine Sills**

**Chris Devers**

**Katherine Legere**

**Faaea Talalemotu**

**Andi Fernandez**

**Chris Morrison**

**Ashley Watts**

### Support Staff

**Will Cheng**

**Peter Lovincey**

**Peter Pope**



## PARK ACADEMY

1915 South Shore Blvd.  
Lake Oswego, OR 97034  
503.594.8800

[www.parkacademy.org](http://www.parkacademy.org)

